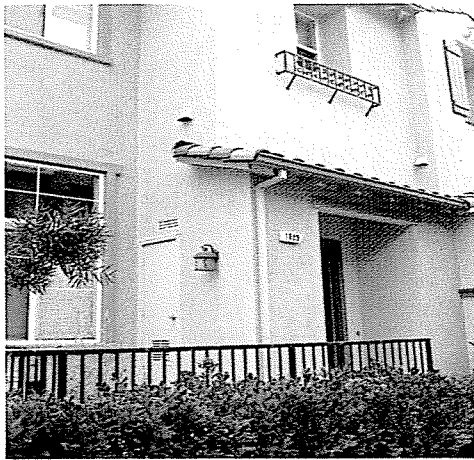


**City of Santa Clara Below Market Price Purchase Program
Features the Following Gorgeous Home For Sale:**

1889 Silva Place, Santa Clara



This like-new townhouse style condominium is conveniently located in Santa Clara near Lafayette Street and Agnew road in the Mission Gardens complex. Home features include (but are not limited to) the following:

- ❖ 3 Bedrooms, 2.5 Baths, 2 Stories
- ❖ 1,458 square feet of living space
- ❖ Two car garage with automatic opener and storage space
 - ❖ Central hear and air
- ❖ Gated community with pool, spa and play structure
 - ❖ All electric kitchen with GE and LG appliances
 - ❖ Elevated ceilings with plenty of natural light
 - ❖ Generous closet and storage space
- ❖ Close to neighborhood shops, services and airport
 - ❖ Pet friendly
- ❖ LG large capacity washer and dryer (sold separately)
 - ❖ Well maintained unit and complex
 - ❖ Monthly HOA fees of \$155

Sales Price = \$495,000

(City 5-year deferred interest-free secondary loan of \$125,000 available to eligible first-time homebuyers)

Income and Resale Restrictions Apply

Household Size	1	2	3	4	5	6
Income Limit	\$79,695	\$91,080	\$102,465	\$113,850	\$122,980	\$132,110

For further information about this Below Market Price unit, please contact:

**Marcie Mitchell, BMR Program Associate
Neighborhood Housing Services Silicon Valley
408-279-2600, ext. 236 Email: mmitchell@nhssv.org or
visit www.nhssv.org and click on Homes For Sale**

Please do not disturb the occupant(s). Please contact Marcie to arrange for viewing.